



# DEAR LADIES AND GENTLEMEN!

ASN Expert Group, Russian Chamber of Construction Expert Witnesses and the Czech Chamber of Judicial Experts  
with the support of Organisation for European Expert Associations EuroExpert invite to the

## 15<sup>th</sup> ANNUAL INTERNATIONAL CONFERENCE CONSTRUCTION AND REAL ESTATE: EXPERTISE AND APPRAISAL

### & INTERNATIONAL SYMPOSIUM Software solutions for construction experts

to be held

30 November – 01 December 2017  
in Prague

#### ORGANISERS



**RUSSIAN CHAMBER  
ROSSROYEXPERTIZA**  
OF CONSTRUCTION EXPERT WITNESSES



#### SUPPORTED by



#### OFFICIAL PARTNERS

**docu tools**



**CONSTRUCTION  
EXPERT**



**EEI** EUROPEAN  
EXPERTISE  
& EXPERT  
INSTITUTE



**HRVATSKO DRUŠTVO SUDSKIH VJEŠTAKA I PROCJENITELJA**  
CROATIAN ASSOCIATION OF COURT EXPERT WITNESSES AND VALUERS

[www.expertconf.com](http://www.expertconf.com)

# The CONFERENCE

This Conference is held since 2003 annually in Prague, Czech Republic. Today this Conference is the only one international expert meeting in the world, devoted to expertise in construction and mostly judicial expertise in construction, which is held on regular basis. During past 14<sup>th</sup> conference meetings the Conference welcomed the participants from more than 50 countries. The participation in the Conference will be a great opportunity for professionals to take part in an outstanding event and to share knowledge and new directions in construction expertise and real estate appraisal.

The Keynote of the 15<sup>th</sup> Conference is **New Challenges for Construction Experts**. During the Symposium the participants will be presented with new software solutions which can be used efficiently by construction experts.

The conference is intended for practicing experts in the field of construction and real estate appraisal, practicing lawyers, arbitrators, mediators, corporate counsel, academics and professionals interested in and/or involved in construction expertise and arbitration.

## CONFERENCE TOPICS

1. Construction expertise and appraisal Best Practice and Standards. New methods in construction expertise.
2. The use of construction experts – practice, procedures and problems. National/Regional Code of Practice for Experts. Remuneration of Experts.
3. Claim, cost, defects and delays analysis and mitigation. Forensic engineering and investigations in construction.
4. Expertise as a vital tool of effective dispute resolution in construction. The role of experts in different processes – Negotiation, Mediation, Adjudication and Litigation. New opportunities for experts within ADR. Expert as an arbitrator in construction disputes.
5. Construction expertise legislation - present and future. International and national registers of judicial experts. The harmonization of the national lists of judicial experts in EU. The list of European experts.
6. Professional expert associations in construction expertise. Qualification, education, training, certification and accreditation of experts.

## Conference Programme

**30 November 2017 (Thursday)**

Registration, opening, Conference keynote presentations.

**01 December 2017 (Friday)**

Symposium and discussions, closing, cocktail reception.

**02 December 2017 (Saturday)**

One-day trip to Germany.

## Conference languages

English, Czech, Russian

## Conference Fees

**Registration fee for Conference and Symposium – 200 €**

This rate includes attendance at the conference and symposium, documentation, lunch and cocktail reception.

**One-day trip to Germany – 100 €**

This rate includes guided round bus trip to Dresden, City center guided walking tour (app. 1 hour), networking.

**Special reduced fees are applied, please contact Organising committee.**

Each person who wants to attend the conference should register and pay the conference fee. Payments can be made by bank transfer or in cash on site – please indicate in registration form. Participation fees are transferred to the account, given in the notification email, sent to the participant by the organising committee after receiving a registration form. One registration form per delegate is required. Registration will only be confirmed once the registration payment has been received and cleared. Please e-mail the proof of payment to Organising committee. Registrations received less than a 14 days before the conference date can only be paid by cash on site. Cancellations and substitutions must be made in writing. No refund can be made for cancellations received after 1 November 2017. However, you can send a substitute delegate at any time. Non-attendance at the event will be considered as a late cancellation and the full fee will be payable. It may be necessary for reasons beyond the control of the organisers to alter the content and the timing of the programme or the identity of the speakers. In the event that the conference has to be cancelled you will be entitled to a full refund of your delegate fees. The Organisers will not be responsible for the reimbursement of any other costs incurred by potential delegates.

## The VENUE

LOCATION:

Thákurova str. 1, Praha 6.  
Czech Technical University in Prague, «Masarykova kolej»

Metro A, station Dejvická, (walking distance from metro 5 minutes).



# ORGANISING & SCIENTIFIC COMMITTEE



**Ing. Sergey  
ZAKHAROV,  
CSc.**

ASN Expert Group, Senior Partner.  
Co-Chairman of the Conference.



**Ing. Jindřich  
KRATĚNA, CSc.**

EuroExpert. Member of Council.  
Co-Chairman of the Conference.



**Ing. Vladimír  
VÁCHA**

Czech Chamber of Judicial Experts,  
Chairman of the Board.  
Co-Chairman of the Conference.



**Ing. Melita  
BESTVINA,  
mr.sc., REV**

President of the Croatian Association  
of Court Expert Witnesses  
and Valuers.



**Ing. Sergey  
DOLZHNIKOV,  
MRICS**

EXINCO GROUP, CEO.



**Sergey  
FEDOROV**

Russian Chamber  
of construction expert witnesses,  
Managing Director.



**Ing.  
Lyubomir  
GERDZHIKOV**

Bulgarian Association for expertise,  
financial-economic and technical  
analyses «SEFITA»,  
member of the Board.



**Ing. Miloslav  
ILAVSKY, PhD.**

Slovak Chamber of Asset Valuers  
and Experts, President.



**Ing. Vladimír  
KULIL, PhD.**

VŠB  
Technical University of Ostrava,  
Institute of property valuation, CEO.



**Ing.  
Juraj NAGY,  
PhD.**

Institute of Economics and  
Civil Engineering (Bratislava),  
Director.



**Doc. Ing. Tamara  
NAREZHAY,  
CSc.**

Moscow State University  
of Civil Engineering.



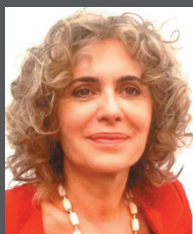
**Doc. Ing.  
Milan NIČ, PhD.**

Slovak Chamber of Civil Engineers.



**Ing.  
Petr ORT, PhD.**

College of Banking (Prague).



**Ing. Sanja  
RADOVIC, MSc.**

President of the Institute of  
Certified Valuers of Montenegro.



**Eva  
SEIDLOVA**

Czech Chamber of Judicial Experts  
Assistant.



**Sergey  
STEPANOV**

ASN Expert Group, President.

## Registration & Information

ASN Experts & Consultants s.r.o. (IČ 2648614800)  
Na Okraji 335/42, Veleslavin, 162 00 Praha 6,  
Czech Republic

Dr. Sergey Zakharov



+420 776 817 278



asn@seznam.cz